



# MONTHLY MEMBERSHIP PROGRESS REPORT

District 5M 6

Results as of: 01/31/2018

GMT: MICHAEL MOLEND

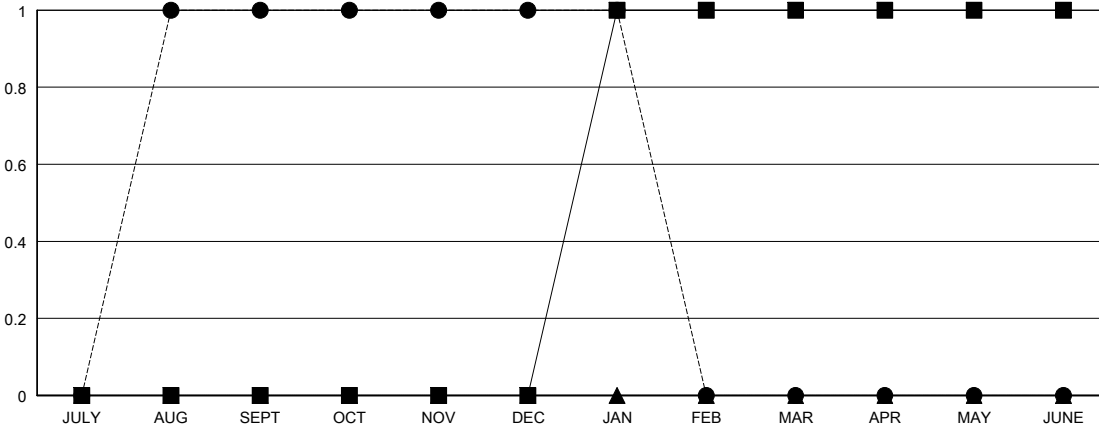
LOCATION MINNESOTA

GMT CA

Clubs			
RESULTS FOR 2017-2018			
QUARTER	NEW CLUB GOAL	NEW CLUBS	DROPPED CLUBS
JULY/AUG/SEPT	0	1	0
OCT/NOV/DEC	0	0	0
JAN/FEB/MAR	1	0	0
APR/MAY/JUNE	0	0	0

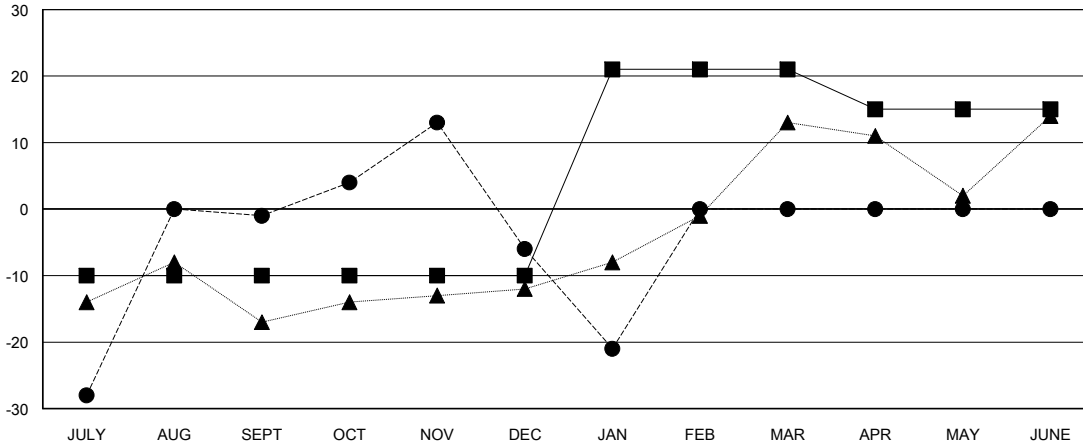
Members			
RESULTS FOR 2017-2018			
QUARTER	MEMBER GROWTH NET GOAL	MEMBER GROWTH ACTUAL	DROPPED MEMBERS ACTUAL (including transfers)
JULY/AUG/SEPT	-10	58	55
OCT/NOV/DEC	0	50	48
JAN/FEB/MAR	31	6	21
APR/MAY/JUNE	-6	0	0

GOALS AND ACTUAL NEW CLUBS CUMULATIVE



- - CURRENT YEAR GOALS FOR NEW CLUBS
- - CURRENT YEAR ACTUAL NEW CLUBS
- ▲ - LAST YEAR ACTUAL NEW CLUBS

GOALS AND ACTUAL MEMBERS CUMULATIVE



- - MEMBER GROWTH NET GOAL
- - MEMBER GROWTH ACTUAL
- ▲ - LAST YEAR MEMBERSHIP ACTUAL

DROPPED CLUBS: 0
------------------

23 CLUBS OF 38 ADDED 1 OR MORE NEW MEMBERS

GENDER DISTRIBUTION	
MALE	1,002 (68.72%)
FEMALE	456 (31.28%)
Women Percentage Fiscal Year Goal: 31%	

DROPPED MEMBERS	
DECEASED	11
CLUB CANCELLED	0
OTHER	113
<b>TOTAL</b>	<b>124</b>

[CLICK HERE FOR CUMULATIVE MEMBERSHIP DATA](#)

TOTAL FAMILY UNIT MEMBERS	285
FAMILY MEMBERS PAYING HALF DUES	143